

Pinze per tronchi

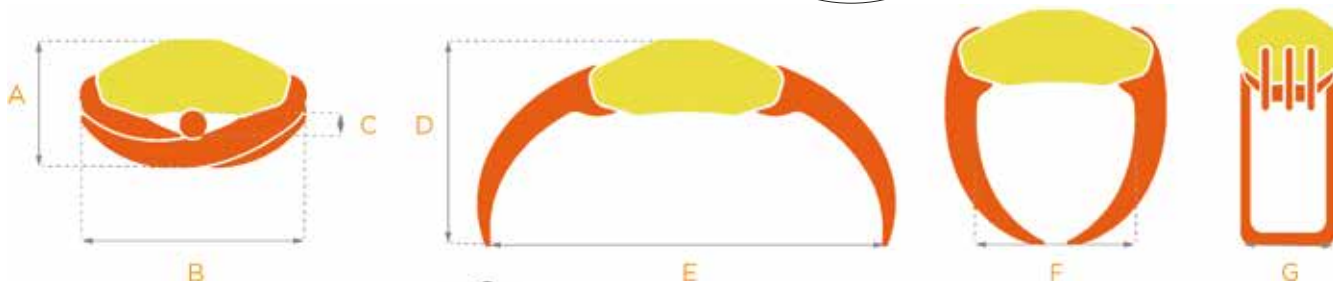
Log grabs - Grappin a bois
Stammgreifer - Garfio para troncos






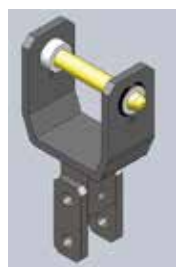
Denti rinforzati
Reinforced teeth
Dents renforcées
Verstarke Zahne
Dientes reforzados



Lama seghettata
Serrated blade
Lame dentelée
Gezahnte Klinge
Hoja dentada



	 Kg.			A mm	B mm	C mm	D mm	E mm	F mm	G mm
KH 080	42 kg	0,7 / 2 ton	AR10P	350	500	55	480	800	380	300
KH 100	75 kg	1,5 / 3,5 ton	AR10P / AR30F	420	591	55	595	1000	430	375
KH 130	120 kg	2,7 / 6 ton	AR30F / AR55F	490	750	120	670	1320	580	440
KH 150	150 kg	3,5 / 6 ton	AR55F	590	860	130	825	1510	680	490
KH 160	220 kg	6 / 9 ton	AR100F	590	875	120	780	1610	630	400
KH 180	260 kg	8 / 13 ton	AR100F / AR160F	660	1020	100	840	1820	700	480



VK 01	1/2 ton
VK 02	2/4 ton
VK 03	4/7 ton
VK 04	8/13 ton



Portata statica max
Max static load capacity
Capacité de charge statique max
Max statische Tragfähigkeit
Capacidad de carga estática max



AR10P	1 ton	11 kg
AR30F	3 ton	23 kg
AR55F	5,5 ton	28 kg
AR100F	10 ton	60 kg
AR160F	16 ton	72 kg