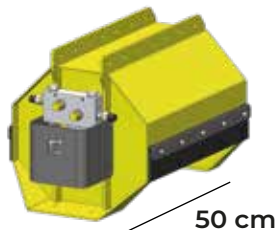
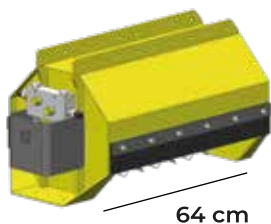


Trincia per escavatori

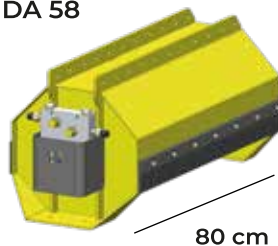
DA 54



DA 56



DA 58

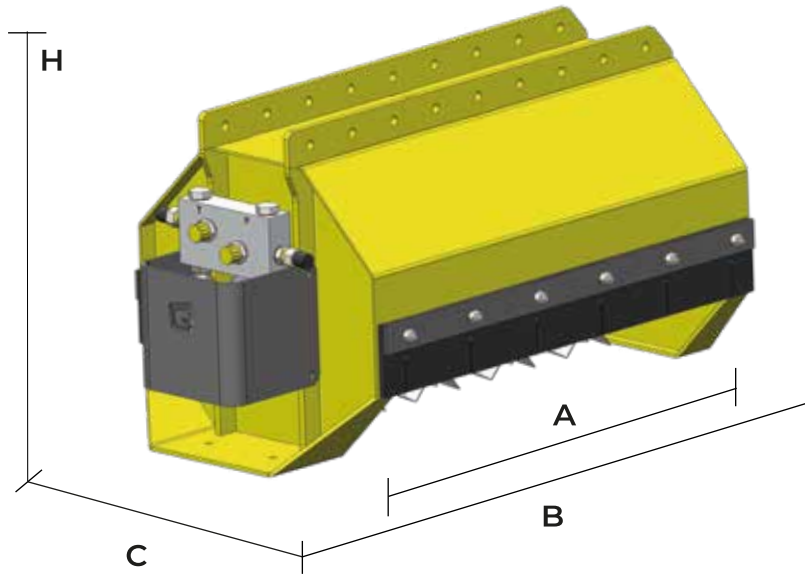


	ton.	Kg.	n.	n.	Lt./min.
DA 54	0,7 - 2,2	85	12	12	19 - 26
DA 56	1 - 3	110	16	16	19 - 26 - 33
DA 58	1,9 - 3,5	130	18	18	33 - 44



DA 54 - 56 - 58

Trincia per escavatori



Rotore a coltelli K



Rotore a mazze H



Ricambio QD 51 A00
Composto da:
1x coltello I cod. 90026
2x coltello / cod. 90014
1x cavallotto cod. 90002
1x vite/dado cod. 90004 + 90003

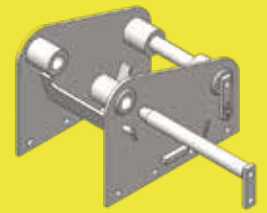


Ricambio QD 50 00
Composto da:
1x mazza 90093
1x cavallotto 90002
1x vite/dado cod. 90004 + 90003

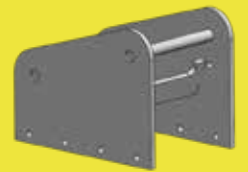
MISURE

	A (mm.)	B (mm.)	H (mm.)	C (mm.)
DA 54	500	720	440	400
DA 56	640	820	440	400
DA 58	800	990	440	400

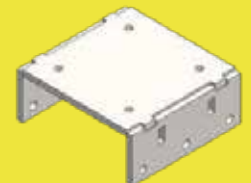
- Trasmissione diretta ✓✓
- Motore in alluminio ✓✓
- Valvole antiurto e anticavitazione ✓✓
- Carpenteria spessa 6 mm ✓✓



VD 51
Attacco a perni sfilabili



VD 52
Attacco a perni fissi



VD 50
Piastra piana imbullonata



VD 54
Adattatore per attacco rapido