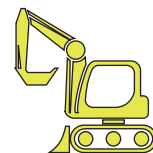


Mulcher for excavators



SKF - bearings and seals.
We build exclusively with original SKF bearings and seals.



2 - 6 ton



Ø 8 cm



165 - 232



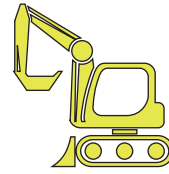
- Direct transmission ✓
- Aluminium engine ✓
- Anti-shock and anti-cavitation valves ✓
- 6 mm thick carpentry ✓



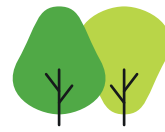
	ton.	Kg.	n.	n.	Lt./min.
DA 06	2 - 3,5	165	16	16	19 - 26 - 33
DA 08	2,5 - 4,5	186	20	20	33 - 44 - 55
DA 10	3 - 6	232	24	24	33 - 44 - 55

Mulcher for excavators

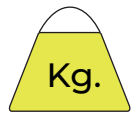
Rotation
3000 rpm
BIDIRECTIONAL



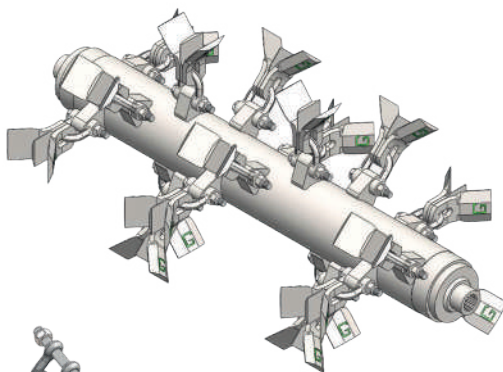
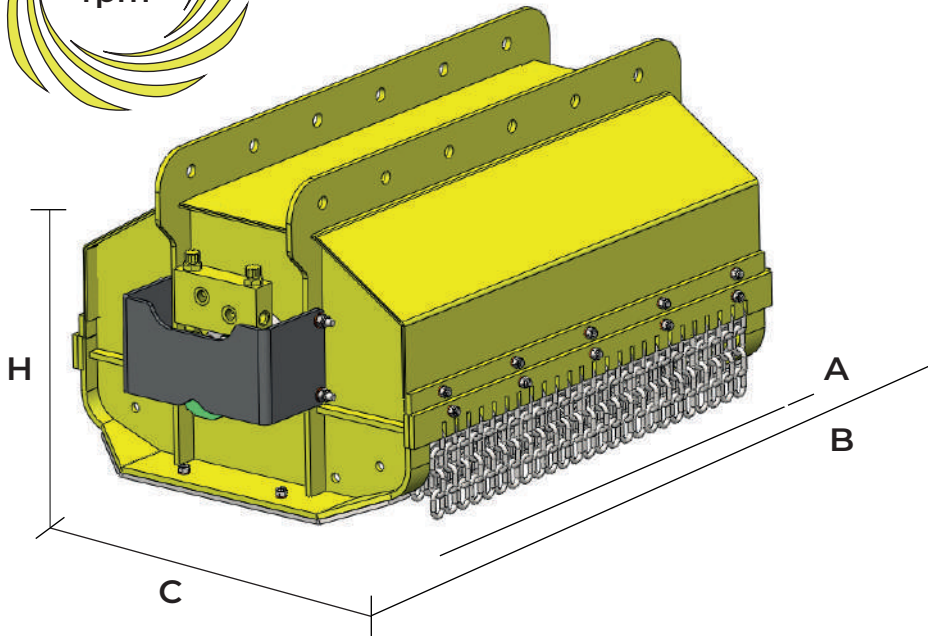
2 - 6 ton



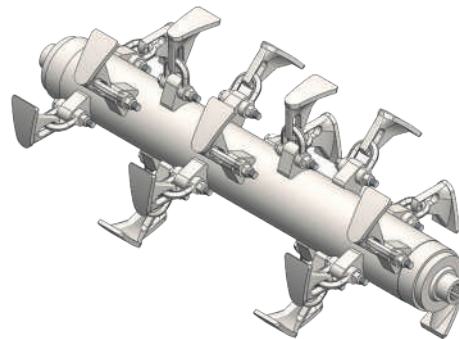
Ø 8 cm



165 - 232



“K” rotor with knives



“H” rotor with hammers

QA 05

Composed of:

1x knife I cod. 90026

2x knife / cod. 90014

1x u-bolt cod. 90002

1x screw/nut cod. 90004 + 90003



QA 14

Composed of:

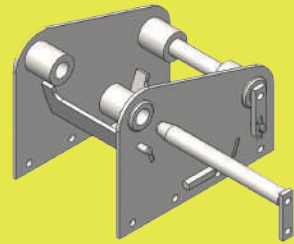
1x hammer 90093

1x u-bolt 90002

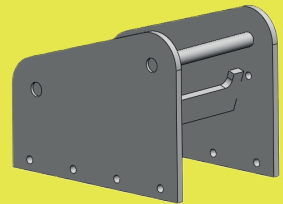
1x screw/nut cod. 90004 + 90003

MEASURES 

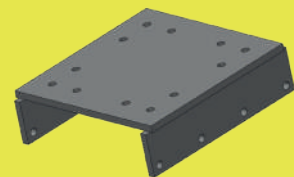
	A (mm.)	B (mm.)	H (mm.)	C (mm.)
DA 06	600	811	538	700
DA 08	804	1000	538	700
DA 10	1042	1242	538	700



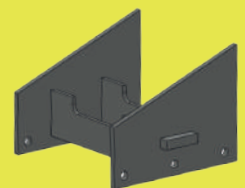
VD 71
Coupling with removable pins



VD 74
Coupling with welded pins



VD 72
Bolted flat plate



VD 73
Quick coupling adapter