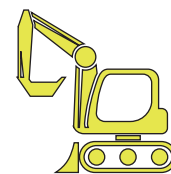


Trincia forestale



SKF - Cuscinetti e serraggi
Costruiamo esclusivamente con cuscinetti, serraggi e ghiera SKF originali.



5 - 30 ton Ø 25 cm

Sportelli laterali completamente apribili



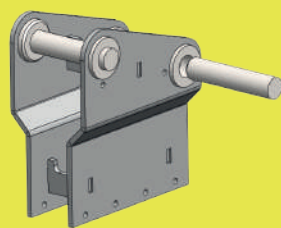
COD. Max lt./min.

DF 10 F27	70
DF 10 F38	100
DF 10 F48	120
DF 10 F64	170

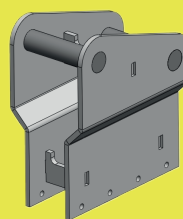


COD. Max lt./min.

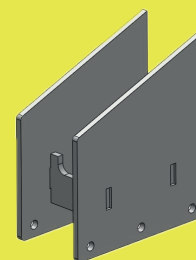
DF 13 F38	100
DF 13 F48	120
DF 13 F64	170



VD 63
Attacco a perni sfilabili



VD 62
Attacco a perni fissi (saldati)

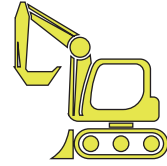


VD 64
Adattatore per piastra piana o attacco rapido

Trincia forestale

MISURE 

	A (mm.)	B (mm.)	C (mm.)	H (mm.)
DF 10	868	811	540	721
DF 13	1306	1674	540	721



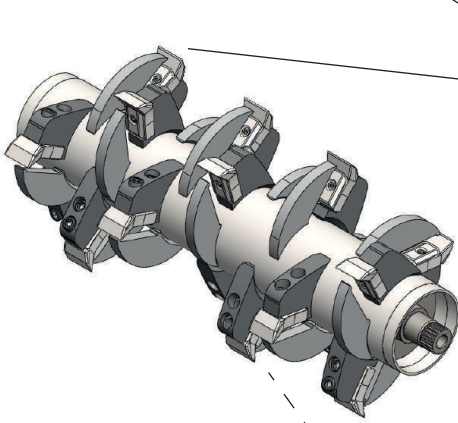
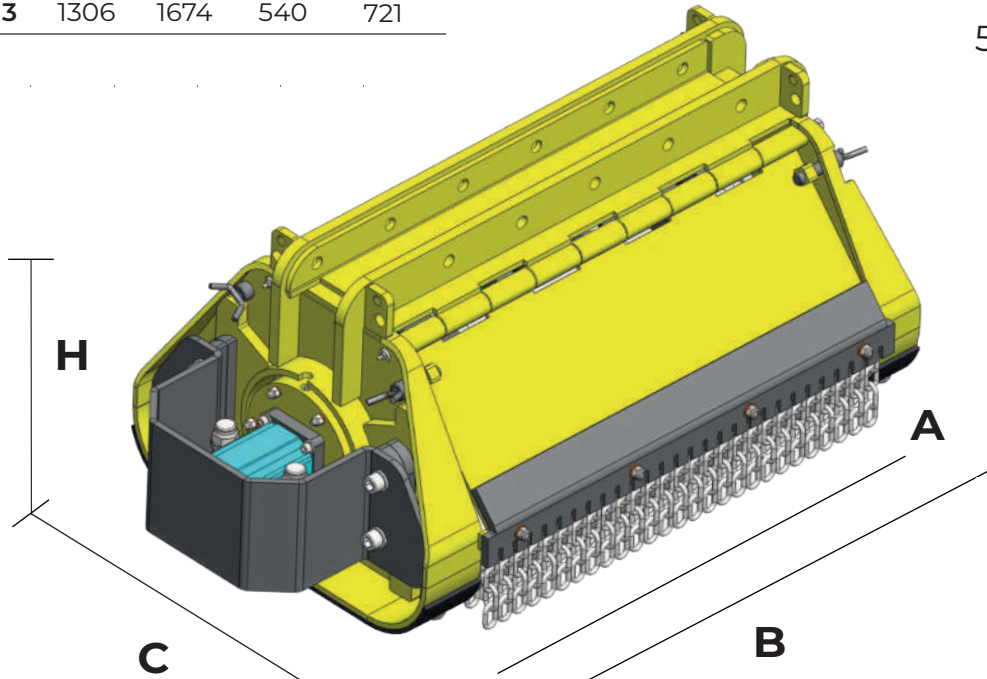
5 - 30 ton Ø 25 cm

DENTI

	n.
DF 10	18
DF 13	27

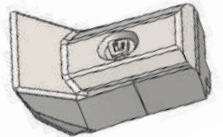
PESO

	Kg.
DF 10	420
DF 13	550



Con Limitatore di Taglio

Cod. 90095
Denti per legno e vegetazione alta



Denti Intercambiabili

Cod. 90094
Denti a placche di metallo duro per terreno sassoso

